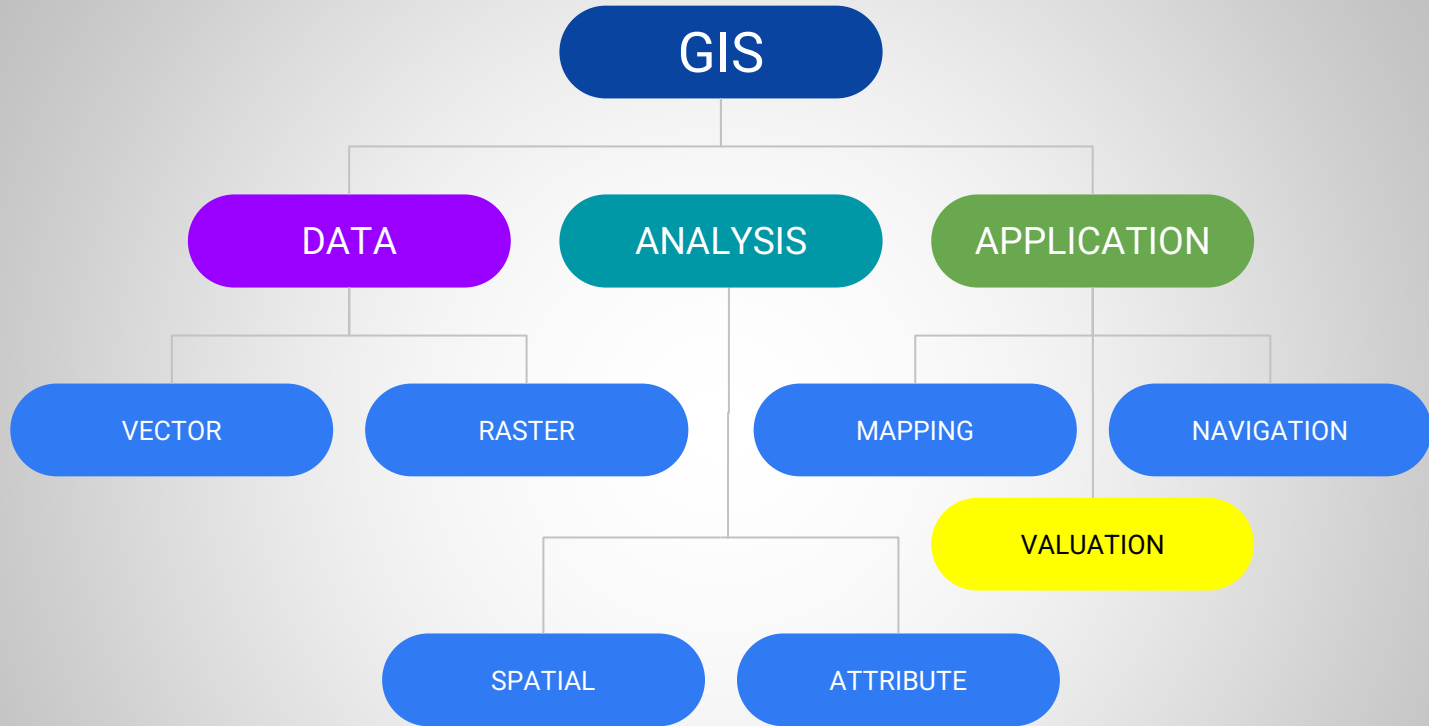


GIS as an opportunity and a challenge in property valuation



The past,
not so long ago



Dział sprawy: GK.021.1308.2322

Województwo: kujawsko-pomorskie
Powiat: tucholski
Jednostka ewidencyjna: 041606_4_Tuchola - Miasto
Ogólny ewidencyjny: 0001_Spółdzielca

STAROSTA TUCHOLSKI

WYPIS Z REJESTRU GRUNTÓW

sporządzono dnia: 07-07-2022 13:45:35

2322 - 07 - 15

KM: 10-17
gdz.: 10-17

nr jednostki rejestrowej: G2846

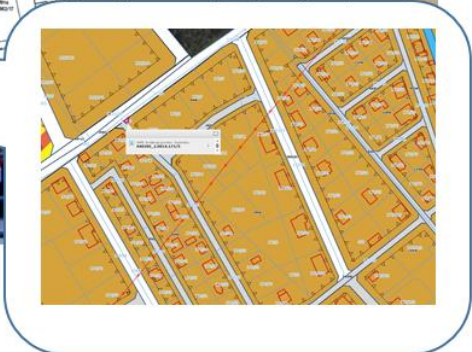
Osoby: 2

Imię i nazwisko	Data osoby fizycznej / ewidencyjny
10	Krzysztof Szyma Magdalena (Szymon, Wiktoria) PESEL: 6001310100 adres: ul. Świerkoczyńska 18, 88-600 Tuchola
10	Lena Mioda (Magdalena, Irena) PESEL: 83117070631 adres: ul. Świerkoczyńska 732, 88-500 Tuchola

Działki ewidencyjne: 1

Numer działki ewidencyjnej	Adres	Powierzchnia [m ²]	Użytek i klasa bonitacji	Plan	Przebieg linii abstrakcyjnej
0401					
0402					
0403					
0404					
0405					
0406					
0407					
0408					
0409					
0410					
0411					
0412					
0413					
0414					
0415					
0416					
0417					
0418					
0419					
0420					
0421					
0422					
0423					
0424					
0425					
0426					
0427					
0428					
0429					
0430					
0431					
0432					
0433					
0434					
0435					
0436					
0437					
0438					
0439					
0440					
0441					
0442					
0443					
0444					
0445					
0446					
0447					
0448					
0449					
0450					
0451					
0452					
0453					
0454					
0455					
0456					
0457					
0458					
0459					
0460					
0461					
0462					
0463					
0464					
0465					
0466					
0467					
0468					
0469					
0470					
0471					
0472					
0473					
0474					
0475					
0476					
0477					
0478					
0479					
0480					
0481					
0482					
0483					
0484					
0485					
0486					
0487					
0488					
0489					
0490					
0491					
0492					
0493					
0494					
0495					
0496					
0497					
0498					
0499					
0500					

Sporządził: Andrzej



And now



id	opis_obiektu	gmina	adres	nr_dok	nr_dok2
1	2 kapitałowo pom., w/ogólnie	Końskie	Zielonka	1542	1543
2	2 kapitałowo pom., w/ogólnie	Końskie	Zielonka	1543	20420
3	3 kapitałowo pom., w/ogólnie	Końskie	Zielonka	1543	15020
4	4 kapitałowo pom., w/ogólnie	Końskie	Zielonka	1543	20410
5	5 kapitałowo pom., w/ogólnie	Końskie	Zielonka	1543	15010
6	6 kapitałowo pom., w/ogólnie	Końskie	Przykuta	1543	20420
7	7 kapitałowo pom., w/ogólnie	Końskie	Zielonka	1543	15010
8	8 kapitałowo pom., w/ogólnie	Końskie	Przykuta	1543	15020
9	9 kapitałowo pom., w/ogólnie	Końskie	Przykuta	1543	20410
10	10 kapitałowo pom., w/ogólnie	Końskie	Zielonka	1543	15010
11	11 kapitałowo pom., w/ogólnie	Końskie	Zielonka	1543	15010
12	12 kapitałowo pom., w/ogólnie	Końskie	Zielonka	1543	15010
13	13 kapitałowo pom., w/ogólnie	Końskie	Przykuta	1543	15020
14	14 kapitałowo pom., w/ogólnie	Końskie	Przykuta	1543	15010
15	15 kapitałowo pom., w/ogólnie	Końskie	Zielonka	1543	15010
16	16 kapitałowo pom., w/ogólnie	Końskie	Przykuta	1543	15010
17	17 kapitałowo pom., w/ogólnie	Końskie	Cuda	1543	15010
18	18 kapitałowo pom., w/ogólnie	Końskie	Przykuta	1543	15010
19	19 kapitałowo pom., w/ogólnie	Końskie	Cuda	1543	15010

GIS contribution to valuation

GIS data sources

European Commission

INSPIRE KNOWLEDGE BASE

Infrastructure for spatial information in Europe

English (en)


Search...

European Commission > INSPIRE


Home Learn Implement Participate Use Toolkit

INSPIRE Video

The INSPIRE Directive: a brief description



Focus On



Latest News

26/06/2023
Save the date: INSPIRE Conference 2023

11/04/2023
Join the JRC team as Scientific Project officer in Technologies for data ecosystems

30/03/2023
Webinar: Location Innovation Academy is open – and you are invited!

[All News](#)

Events

28/11/2023
INSPIRE Conference 2023

21/04/2023
APIs for High-Value Datasets to create High Value Ecosystems for Citizens and Businesses

28/02/2023
GOPEG workshop: Practicing FAIRness for geospatial and cross-border data

[All Events](#)

Quick Links

GIS data sources

Natural Earth

Global Map

FABDEM

UNEP Environmental Data Explorer

GSHHG

ASTER GDEM

OpenTopography

NCAR GIS Climate Change Scenarios

IRI/LDEO Climate Data Library

Global Climate Monitor

Datasets from the United Nations Environment Programme

Mineral Resource Data System

World Bank Geodata

Global Administrative Areas

Crop Calendar Dataset

Global Agriculture Lands

Global Irrigated Area Map (GIAM)

Past and Present Agricultural Land Use

Historic Croplands Dataset, 1700-1992

Global Reservoir and Dam (GRanD) Database

Orrbodies

Rextag Global Energy GIS Data

International Peace Information Service (IPIS) Open Data

HydroSHEDS

USGS Land Cover Institute

Atlas of the Biosphere: Mapping the Biosphere

Global 200

Global Lakes and Wetlands Database

Conservation GIS Data

The Biodiversity Hotspots

Pilot Analysis of Global Ecosystems: Forest Ecosystems

SoilGrids1km - soil property and class maps

Harmonized World Soil Database

Armed Conflict Location and Event Dataset

Gridded Population of the World (GPW)

Global Rural-Urban Mapping Project (GRUMP)

Global Roads Open Access Data Set (gROADS)

OpenStreetMap

World Port Index

OpenFlights Airport, Airline and Route Data

GeoHive

Viewfinderpanoramas Digital Elevation Model (DEM) repository

CHELSA Climatologies at high resolution for the earth's land surface areas

OpenAerialMap

OpenLandMap

IPUMS International

- spatial identification/geolocalization
- attribute/data identification
- spatial analysis
- market modelling
- value modeling

spatial identification

Spatial identification also known as geopositioning, geotracking, geolocalization, geolocating, geolocation.

Search by:

- address,
- plot data,
- identification numbers,
- co-ordinates.

Geolocation can be performed in both directions, i.e. from the address to the coordinates or vice versa

Currently, various localization tools are available in the form of separate programs, add-ons to websites and plug-ins for GIS programs.

spatial identification

pl × ▾



Aplikacja GEOKODOWANIA

Geokodowanie

Geokodowanie to ustalenie współrzędnych geograficznych na podstawie innych danych geograficznych (np. adres

Aplikacja pozwala na geokodowanie następujących rodzajów danych:



- adresy
- działki ewidencyjne
- podział administracyjny
- miejscowości
- obiekty fizjograficzne

Geokodowanie odwrotne



Odwrotne geokodowanie to proces polegający na przypisaniu do współrzędnych innych informacji dotyczących danego miejsca np. adres

Przekazywany do aplikacji plik powinien być w jednym z następujących formatów:

- xls/x
- csv/txt (rozdzielony przecinkami)
- geojson
- shp (spakowany do pliku zip)

Polskie i inne znaki diakrytyczne powinny być kodowane w UTF-8.

WYBIERZ PLIK



lub upuść go tutaj

spatial identification

The screenshot displays the MAA-AMET web application interface. The top navigation bar includes the MAA-AMET logo, language selection (EST/ENG), and navigation icons. The left sidebar contains a 'Land Information' dropdown menu and a 'Map application thematic layers' section with various checkboxes for map features like 'Cadastral map', 'Registered parcel', 'Parcel by surveying', and 'Form of ownership'. The main map area shows an aerial view of a residential area with yellow parcel boundaries and red buildings. A blue outline highlights a specific parcel. A 'Layer's data' popup window is overlaid on the map, displaying a table with the following data:

Identifier	Address	Register part
78401:101:3626	Kalaranna tn 6	2028101

Below the table, the text 'Maximum allowed results: 100. Results: 1' is visible. The bottom of the interface shows a 'Base maps' section with a scale bar (50m), coordinates (X:6590212.46 Y:542614.71), and a small inset map of Estonia.

spatial identification

The screenshot displays the Geoportal.gov.pl interface. At the top, the logo and navigation menu are visible. The main map area shows an aerial view with red and blue outlines of buildings and plots. A search window is open on the right, and an information popup is visible over a specific plot.

geoportal.gov.pl
PLIK WIDOK ANALIZY POBIERANIE DANYCH WYSZUKIWANIA

Geoportal krajowy

Wyszukiwanie działek
Nr działki, identyfikator lub nazwa obrębu i nr działki

146505_8.0117.48

Podanie numeru działki wymaga uzupełnienia dodatkowych pól

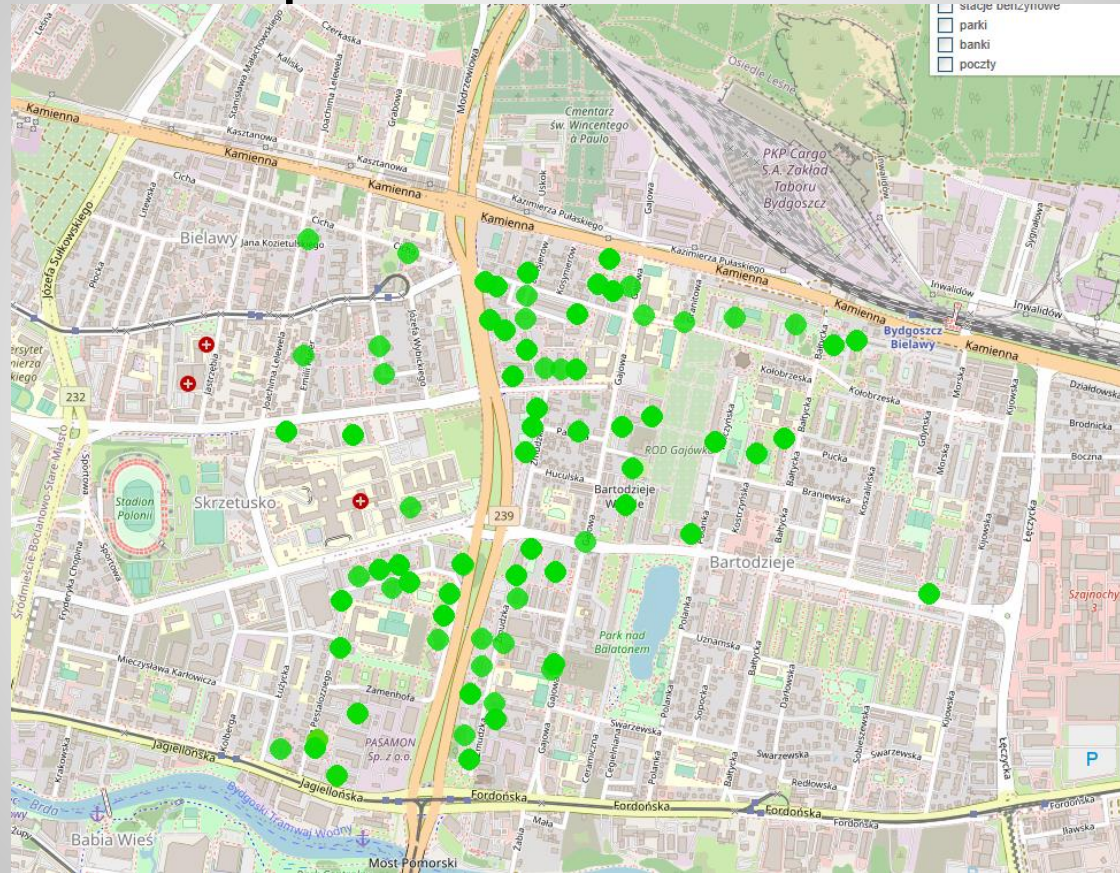
Szukaj

Działki

identyfikator	działka
146505_8.0117.48	48

WMS, Ewidencja gruntów i budynków
146505_8.0117.48

spatial identification



attribute/data identification

Identification of property attributes using GIS data by automating data download for vector formats and visual identification for raster formats.

Identification of attributes:

- utilities,
- surface parameters,
- development status,
- neighborhood,
- types of roads,
- location in protected areas
- and others.

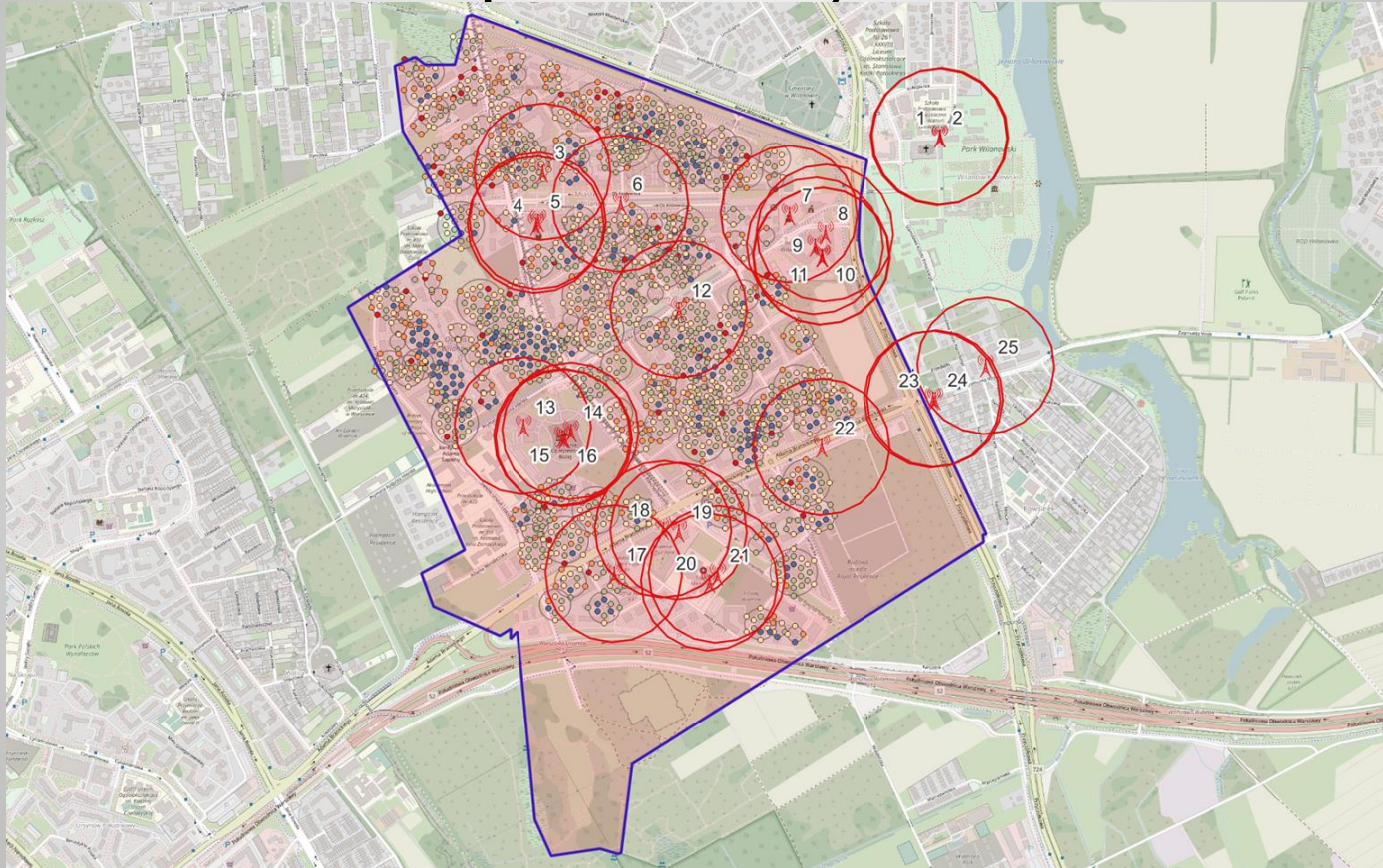
spatial analysis

Identification of various types of objects and their arrangement in relation to the object of valuation or the real estate market.

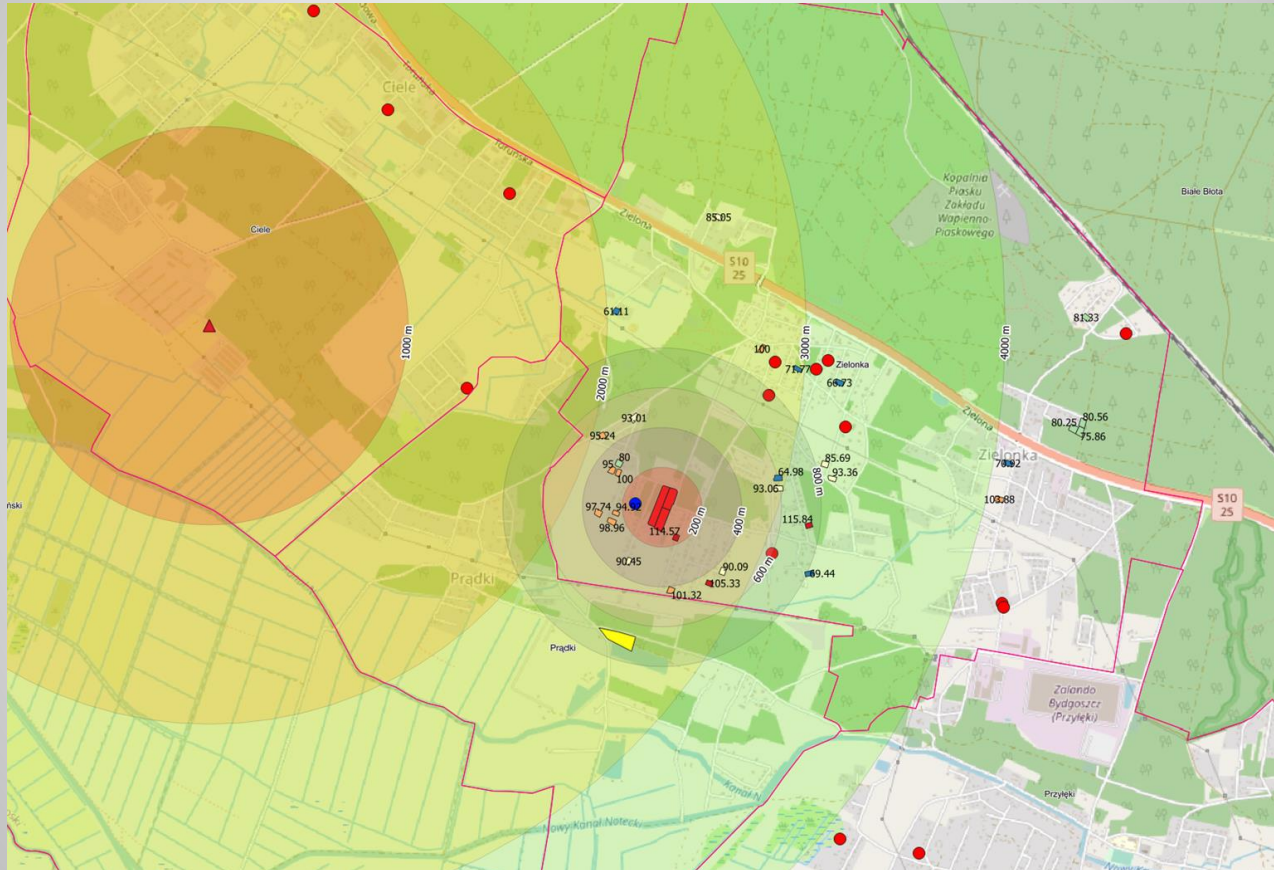
Spatial analysis:

- trade areas,
- study of the dependence of factors,
- and others.

spatial analysis



spatial analysis



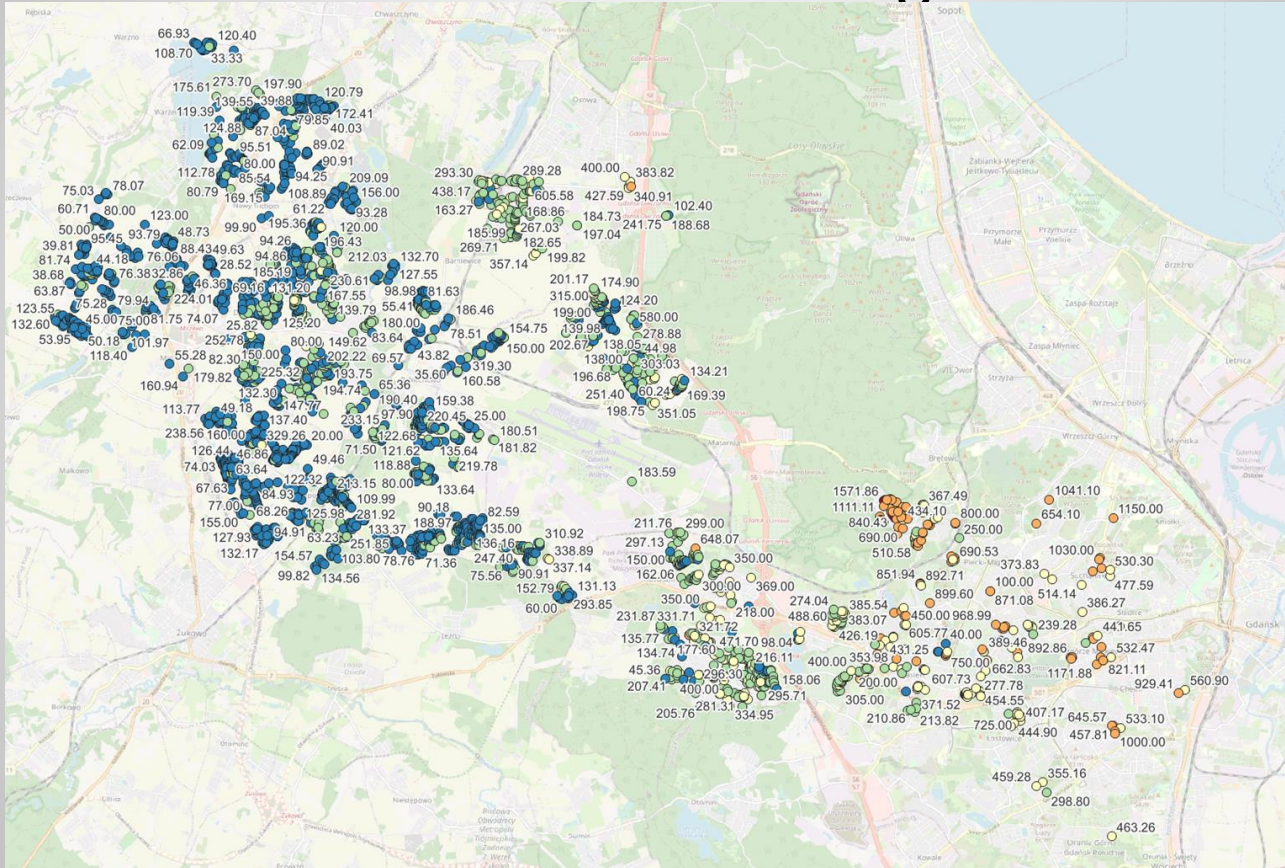
market modelling

Creating maps of real estate prices in static and dynamic terms.

Reducing the subjectivity of market assessment.

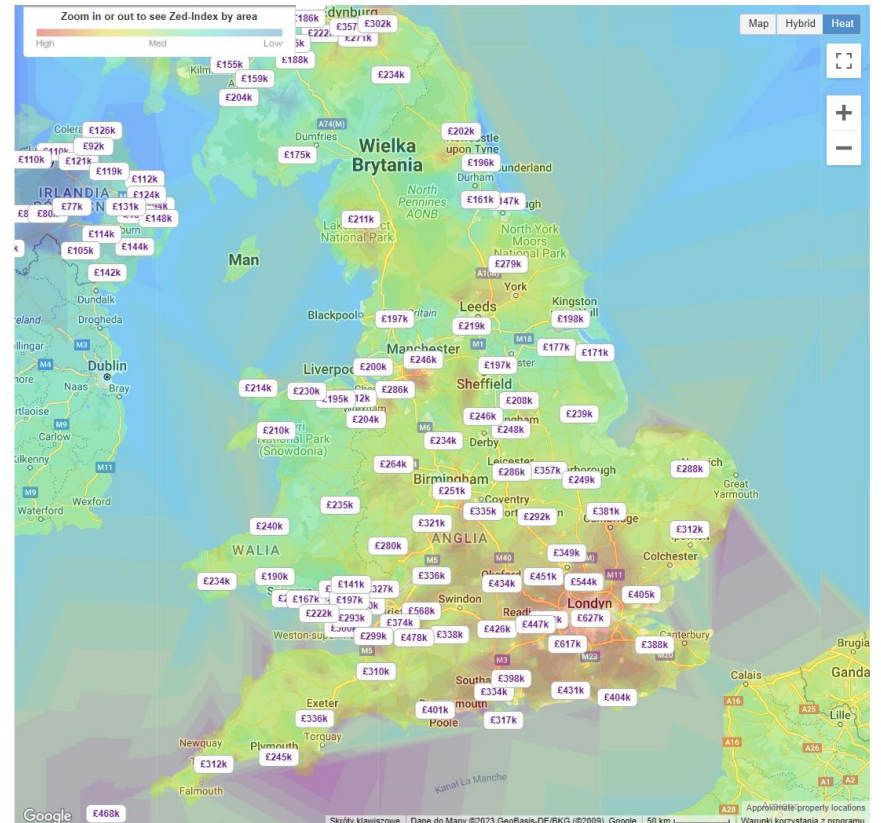
Impact on the real estate market through informational feedback

market modelling

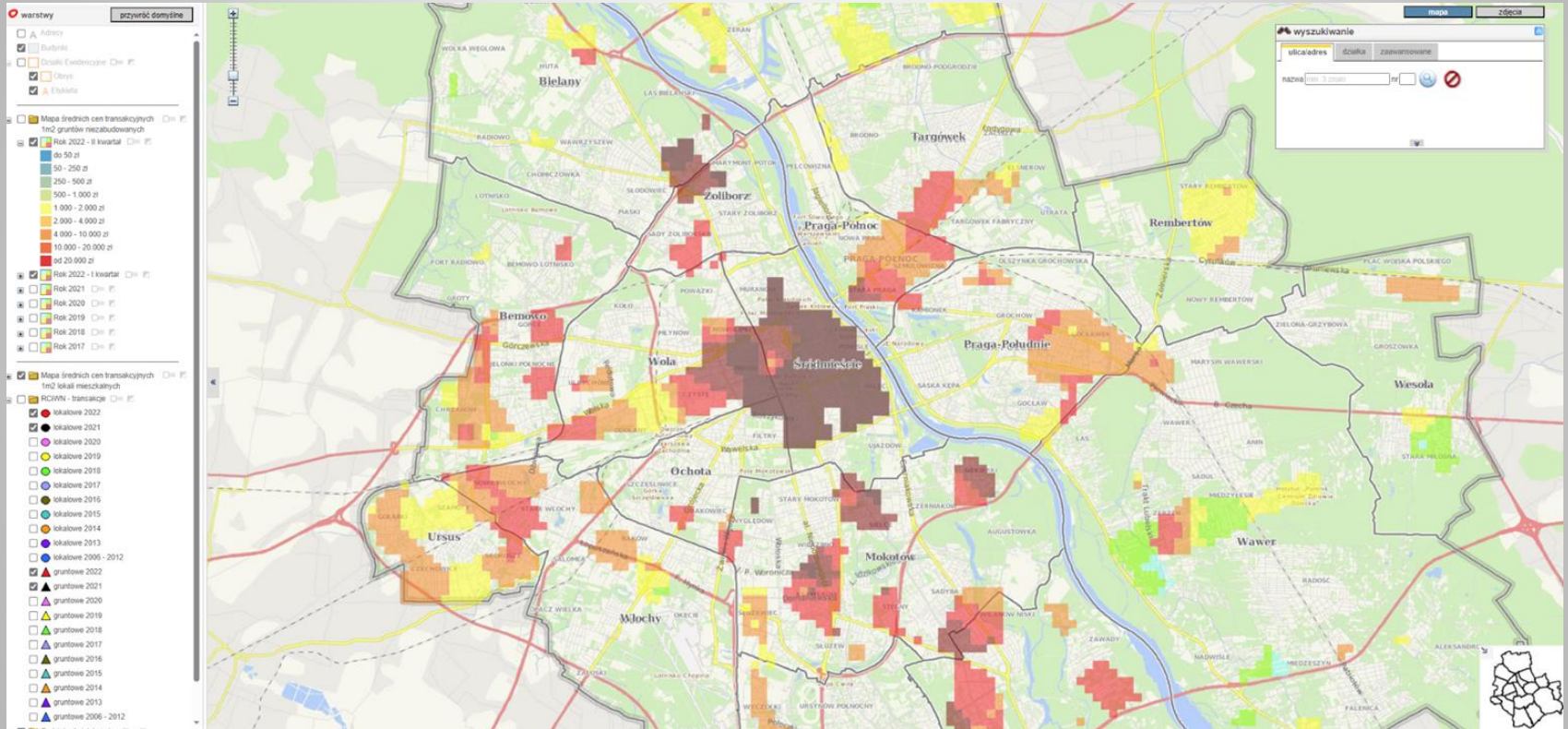


market modelling

Heatmap of UK property values



market modelling



market modelling

Mapping Home Price Changes

Explore year-over-year changes in home prices since 2003, both regionally and nationally, using this dynamic map — updated with new home price index data on a monthly basis. Hover over a county for granular data.



RECEIVE E-MAIL ALERTS FOR RESEARCH

enter your email

SUBMIT

Latest Release June 2023

REGIONAL PRICES

NATIONAL PRICES

Play full sequence series



Manually move through months/years

2023

Advance manually through the series

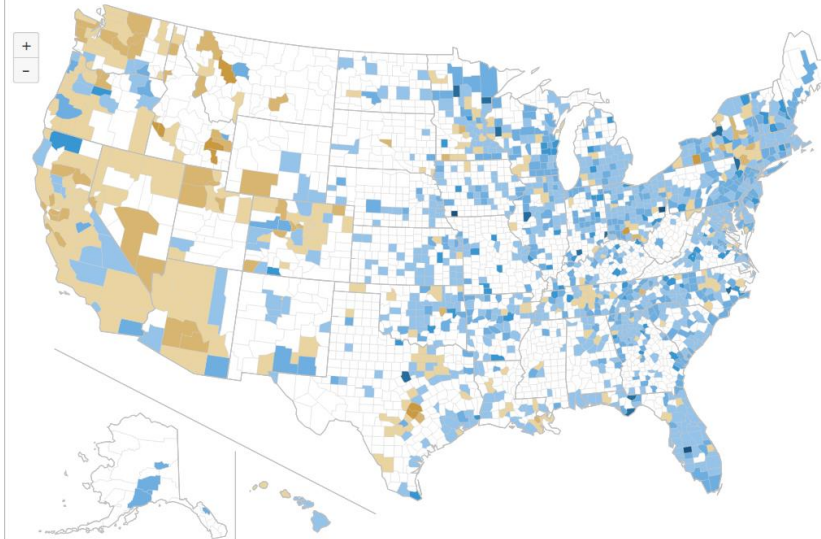
June 2023

United States
1.6%

County
--

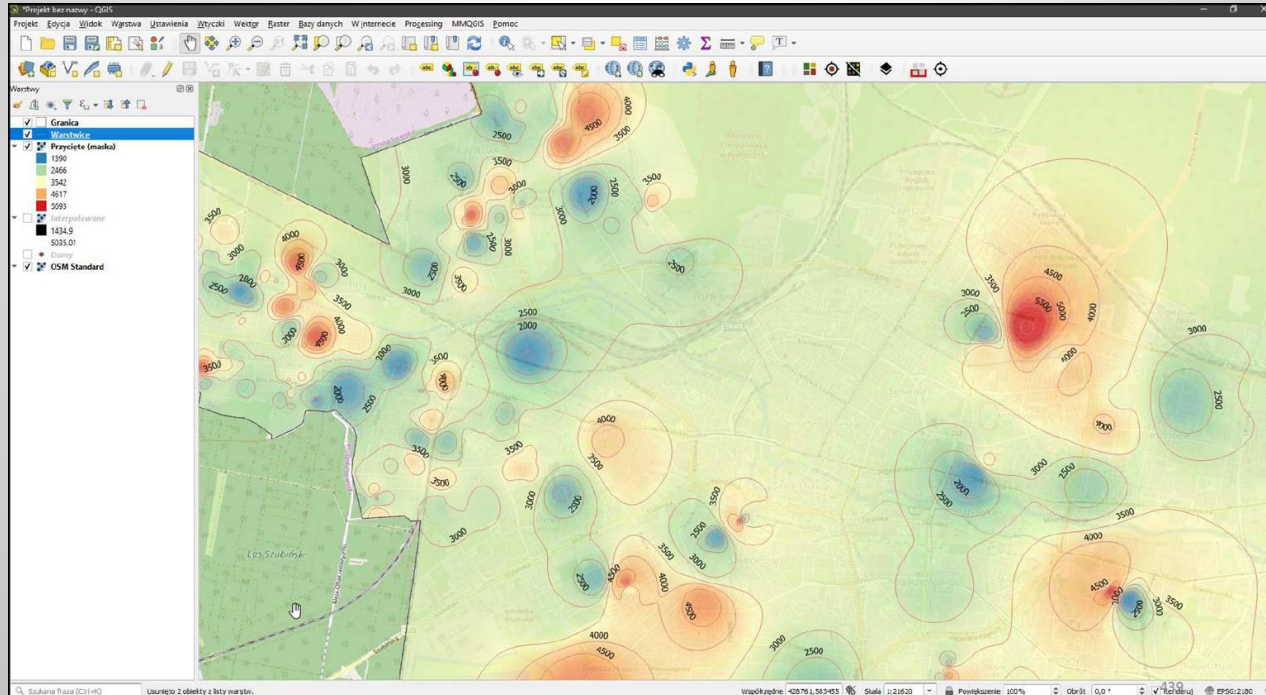


Hover over a county for granular data.



value modeling

Creating value maps that take into account factors objectively modeling value determined on the basis of market analysis data.



VALUATION contribution to GIS

- mapping the transaction
- description of buildings
- value maps

How to effectively use GIS resources in property valuation

- converting to vector formats
- improving data processing tools
- automation of the process of obtaining descriptive information
- improving valuation models

Can the increase in data
availability also be a threat?